

Treatment of patients with AMI in the Czech Republic

Jan Vojacek, MD, FESC, FACC
Professor Cardiology

University Hospital
Charles University
Hradec Kralove
Czech Republic





Informace

2 3 4
Informační deska s textem a obrázky

Informace

Místy 3

3

Kartotéka

Plánování péče
& hospitalizací

Plánování péče & hospitalizací
Kartotéka



Číslo	Průběh
878	Průběh 1
816	Průběh 2
879	Průběh 3
877	Průběh 4
744	Průběh 5
305	Průběh 6
779	Průběh 7

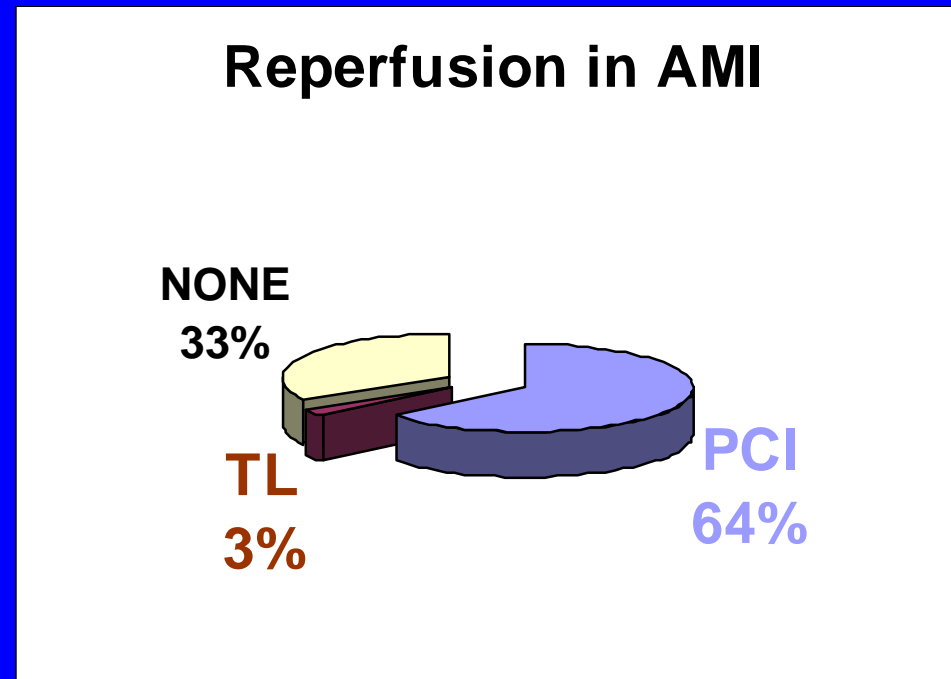
MEDICINĚ
NEKORIST



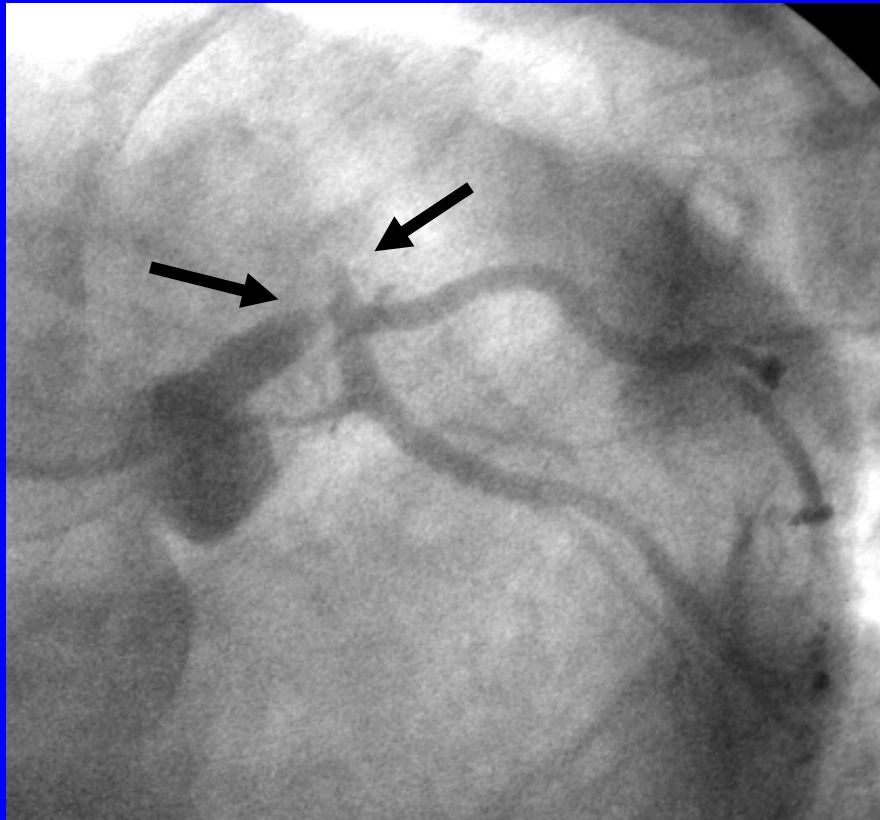


DEMOGRAPHIC DATA

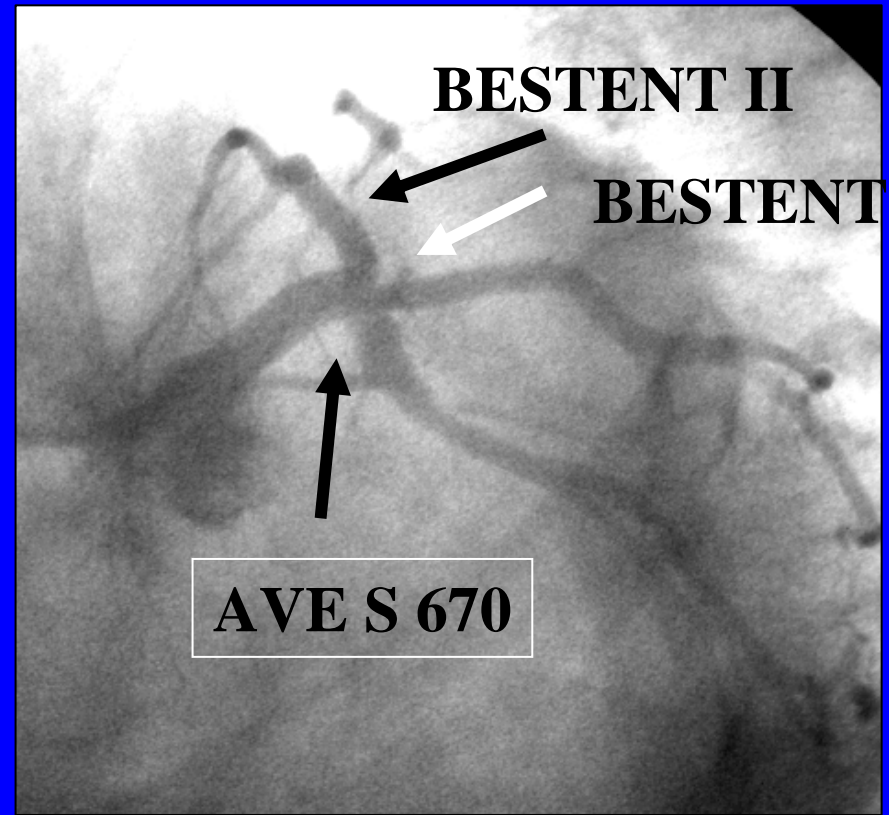
- **Czech Republic**
- **Population 10.2 mln**
- **79 000 sq. km**
- **AMI 15 000 / year**



TRIFURCATION STENTING OF LEFT MAIN CA IN 50-YEAR OLD MAN WITH AMI



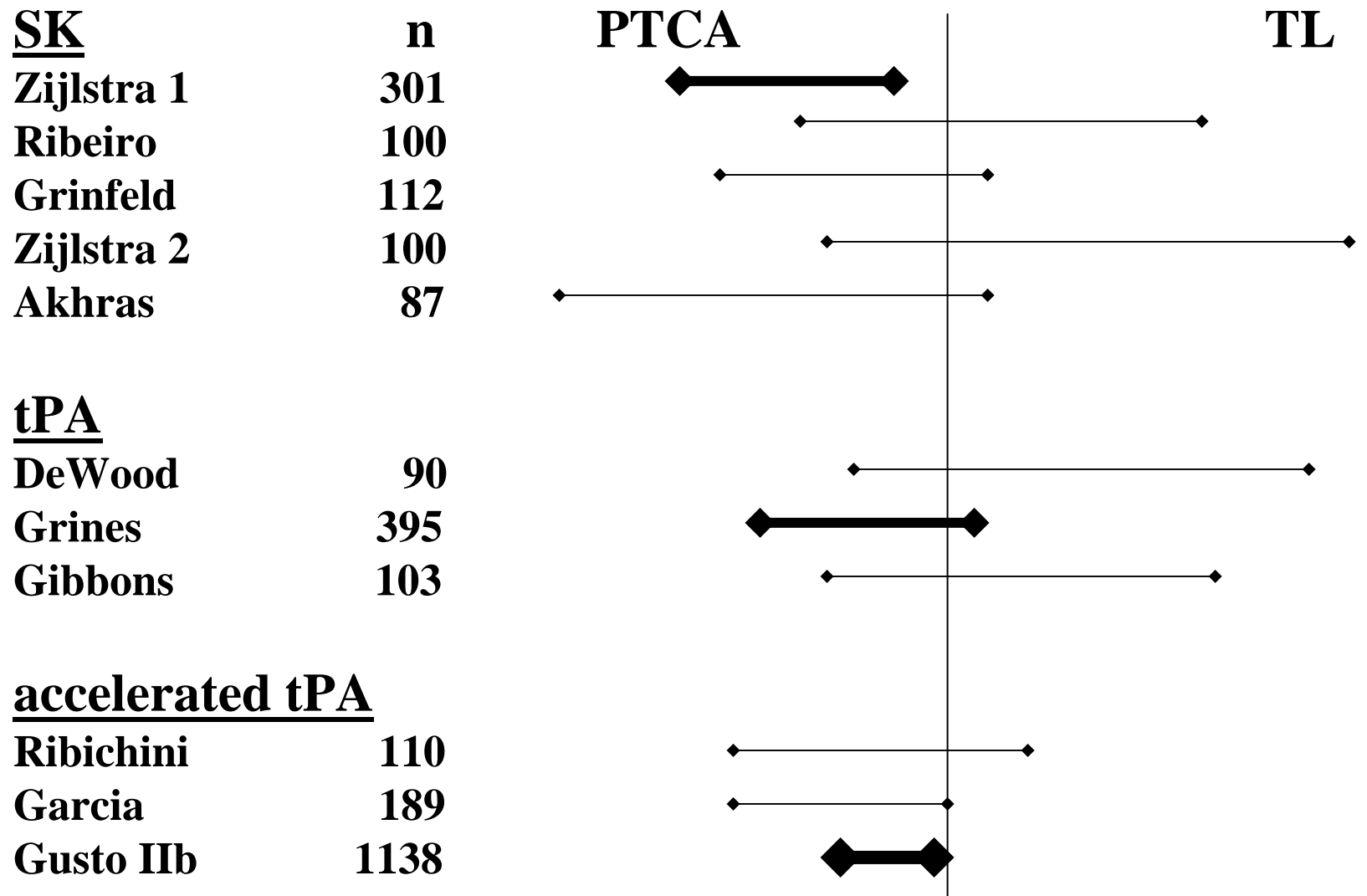
BEFORE PTCA




AFTER PTCA



PTCA vs THROMBOLYSIS in AMI – 30 day MORTALITY



PTCA vs THROMBOLYSIS in AMI – 30 day MORTALITY

	PTCA		TL
CELKEM	n = 2725		

PRIMARY PTCA IN AMI

**Metaanalysis –
11 randomised
trials**

PCI vs TL

**30 day or 6 weeks
mortality**

PATIENTS

n=6478

PTCA

n=3241

mortality 5,5 %

TL

n=3237

mortality 7,8 %

PRIMARY PTCA IN AMI

**Metaanalysis –
11 randomised
trials
PCI vs TL**

**MACE (death, AMI,
revascularisation,
stroke**

30 days or 6 weeks

PATIENTS

n=6478

PTCA

n=3241

MACE 8,0 %

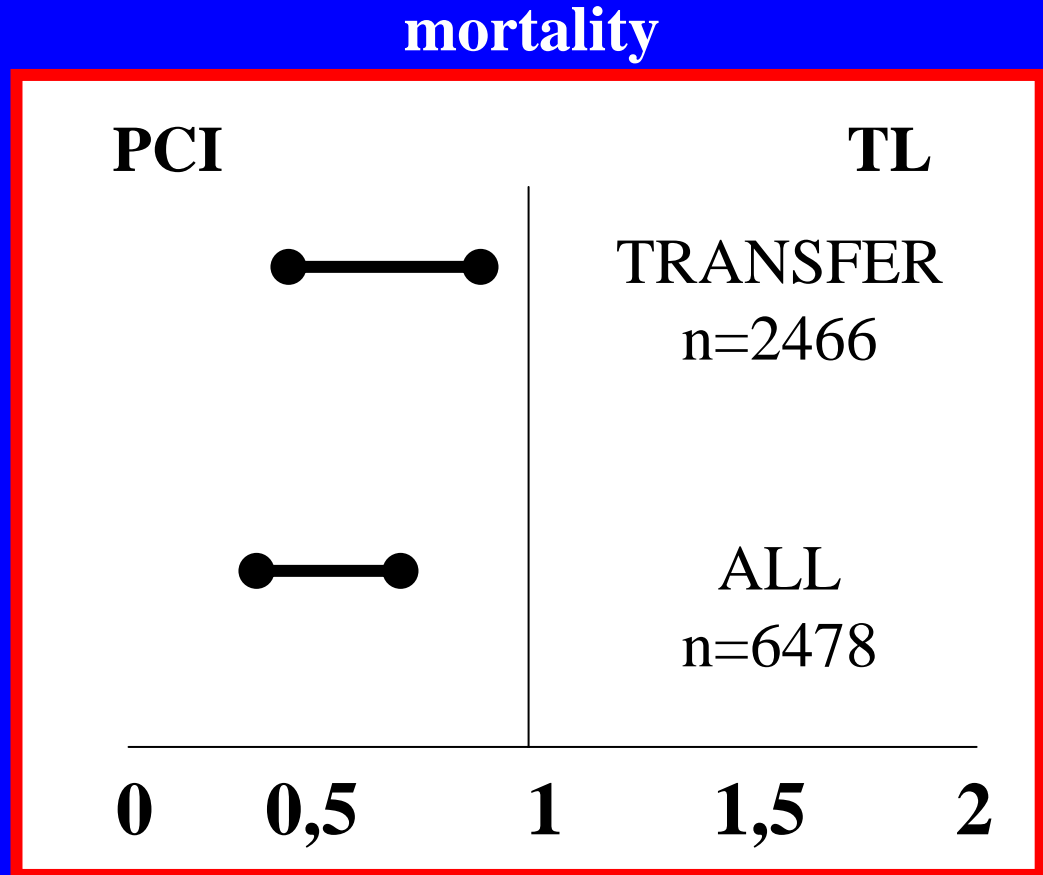
TL

n=3237

MACE 14,0 %

PRIMARY PTCA IN AMI

**Metaanalysis –
11
randomised
trials
PCI vs TL**



PRAGUE – 2

mortality and time from symptom onset

		PTCA	TL
			%
SK vs transfer+PCI n = 850 mortality 30 days	ALL	6,8	10,0^{ns}
	0-3 hours	7,3	7,4^{ns}
	3 – 12 hours	6,0	15,3^{**}

REPERFUSION MODE in AMI

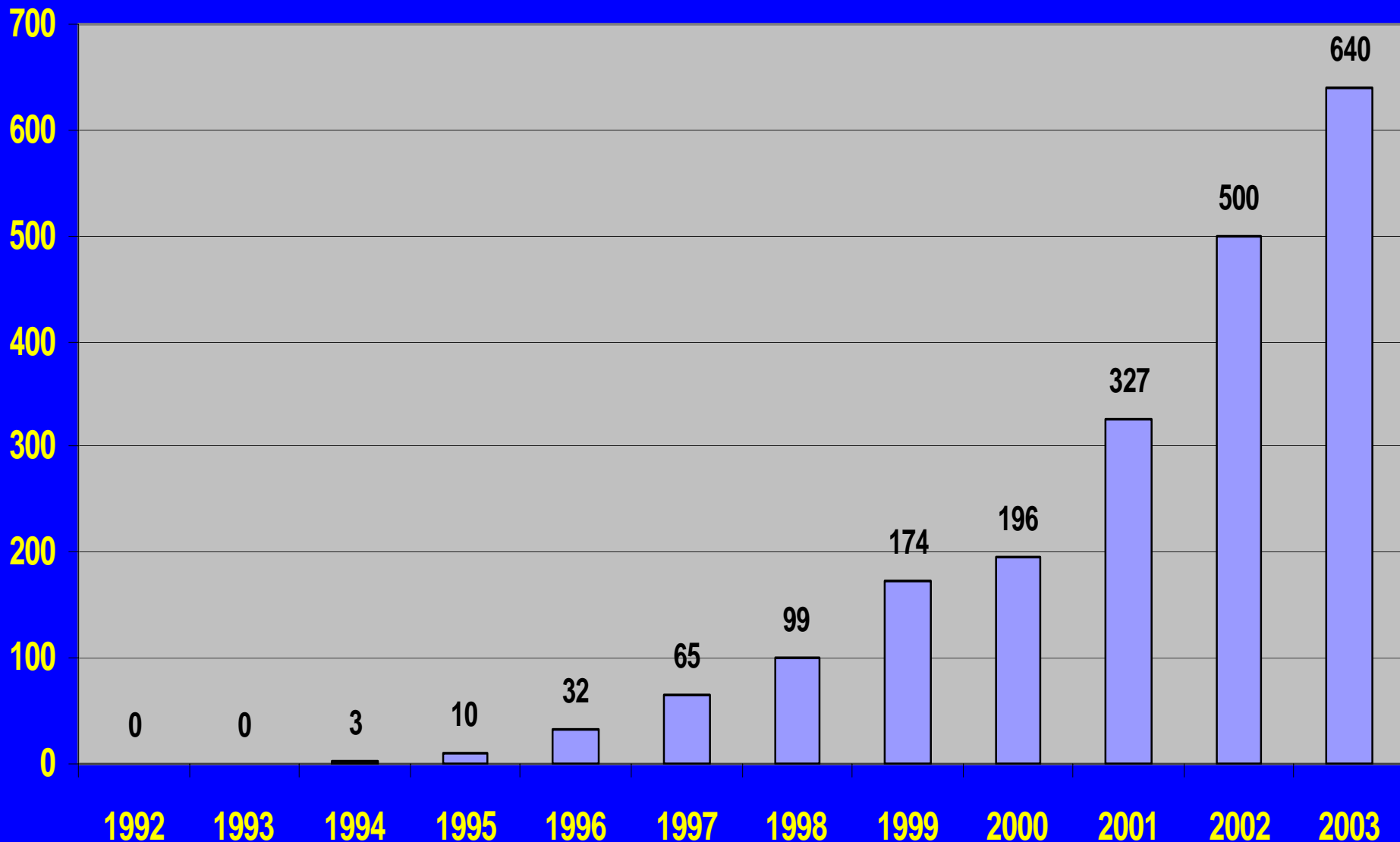
Pain onset	TRANSFER TIME (mins)		
	< 30	30 – 90	> 90
< 3 hours	PTCA	PTCA/TL	TL
3 – 12 hours	PTCA	PTCA	PTCA/TL
> 12 hours	CCU	CCU	CCU

PRIMARY PTCA IN AMI

- **24 HOURS 7 DAYS A WEEK CENTERS**
- **evenly distributed**
- **DIRECT CONTACT AMBULANCE → CATHLAB**
- **WORKLOAD (per year)**
 - 300 1° PTCA / CENTRUM**
 - 100 1° PTCA / OPERATOR**

PTCA IN AMI - CZECH REPUBLIC PER MILLION INHABITANTS

n/mio



CAG, PTCA, STENTS AND PRIMARY PTCA IN CZECH REPUBLIC 1992 - 2003

n/mio

6000

5000

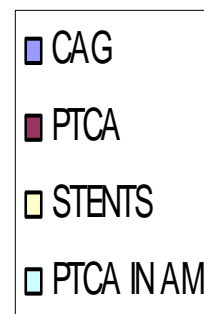
4000

3000

2000

1000

0



1992

1993

1994

1995

1996

1997

1998

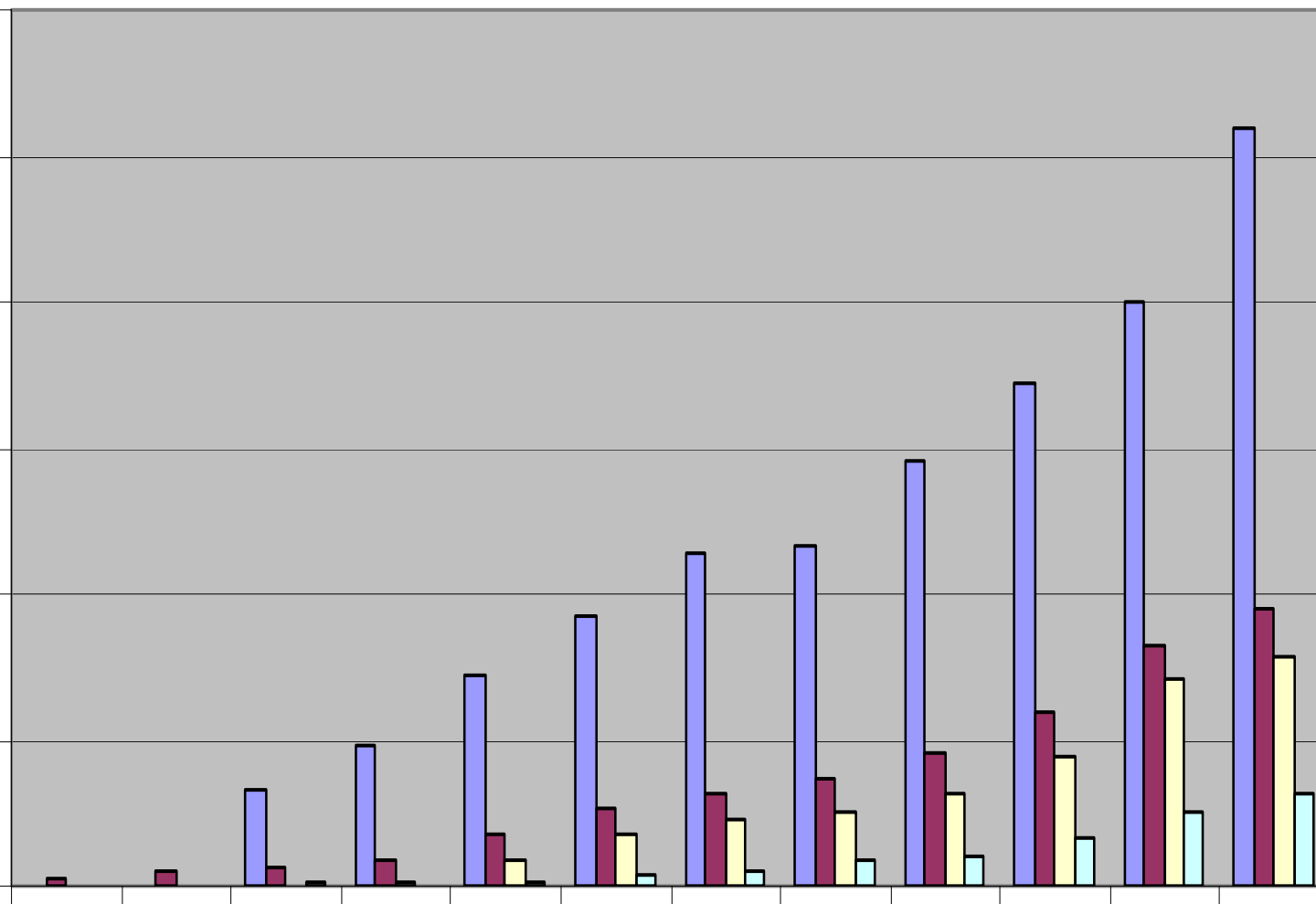
1999

2000

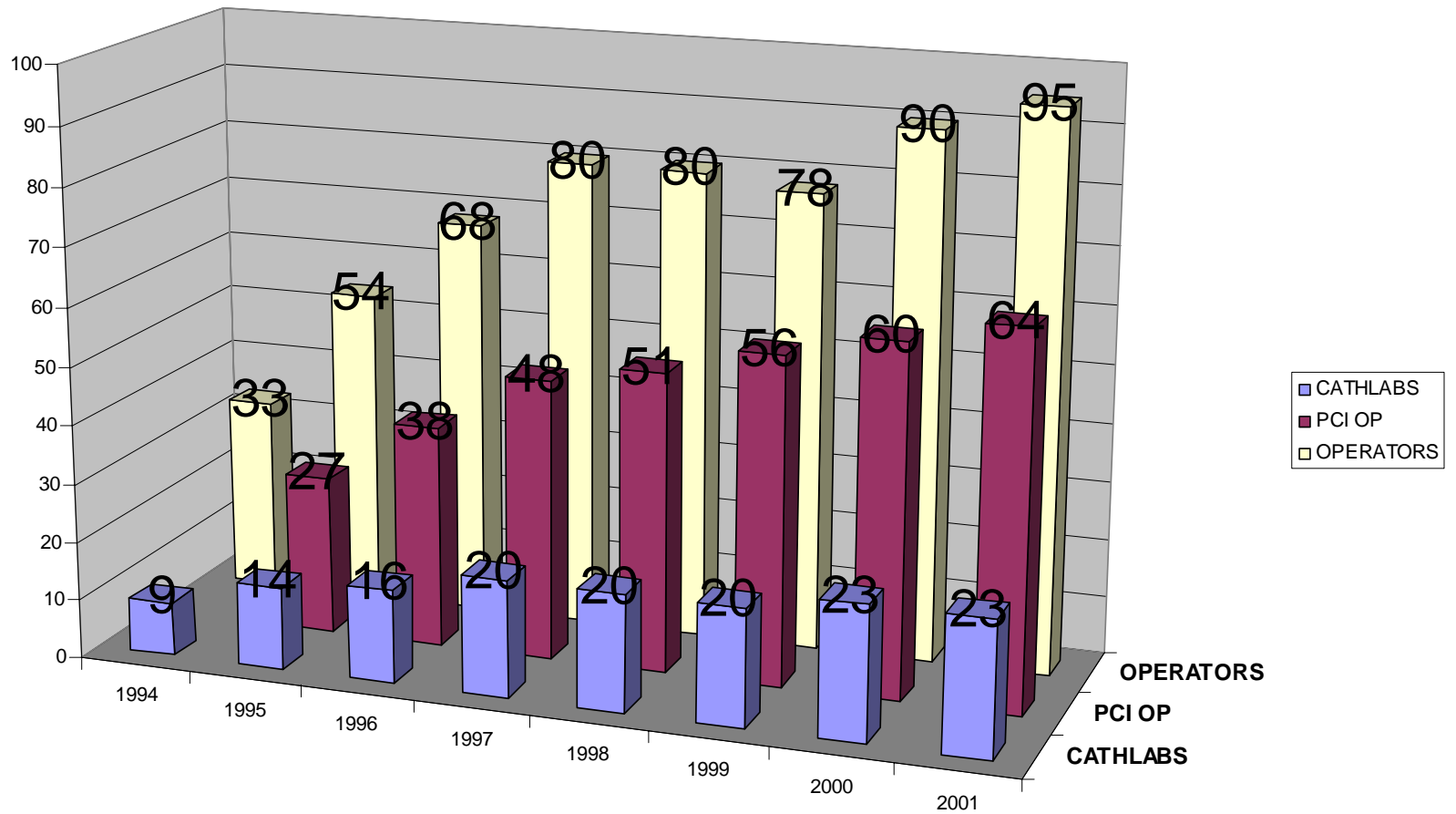
2001

2002

2003



CATHLABS, OPERATORS, PCI OPERATORS



**PCI
PER
MILLION**

2001

**REGISTRY
WG ESC**

Germany	2 381
Island	2 065
Belgium	1 784
Norway	1 678
Switserkand	1 639
France	1 532
Rakousko	1 494
Lucemburg	1 423
Sweden	1 204
Czechia	1 171
Netherlands	1 149
Itály	1 128
Denmark	1 032
Cyprus	933
Finland	866
Spain	761
Poland	742
UK	663
Portugal	619
Slovenia	599
Lithuania	568
Greece	533
Hungary	522
Turkey	475
Croatia	474
Estonia	469
Latvia	447
Slovakia	233
Romania	98

PCI IN ONGOING AMI PER MILLION

2000

REGISTRY WG ESC

SPAIN	59
ESTONIA	104
LITUANIA	168
SLOVAKIA	18
POLAND	55
PORTUGAL	76
AUSTRIA	144
GERMANY	217
CROATIA	18
GREECE	39
LATVIA	70
BELGIUM	NA
FINLAND	NA
FRANCE	NA
HUNGARY	NA
BELGIUM	78
ROMANIA	14
LUXEMBURG	189
ICELAND	32
NORWAY	93
UK	NA
TURKEY	NA
ITALY	NA
CZECHIA	250
SWITZERLAND	157

Longevity

rok	muži	ženy
1955	66,6	71,6
1960	67,9	73,4
1970	66,1	73
1980	66,8	73,9
1990	67,6	75,4
1991	68,2	75,7
1992	68,4	76,1
1993	69,2	76,4
1994	69,5	76,6
1995	69,7	76,6
1996	70,4	77,3
1997	70,5	77,5
1998	71,1	78,1
1999	71,37	78,15
2000	71,65	78,35
2001	72,07	78,41
2002	72,07	78,54
2003	72,03	78,51
2004	72,55	79,04

Longevity in some EU countries

